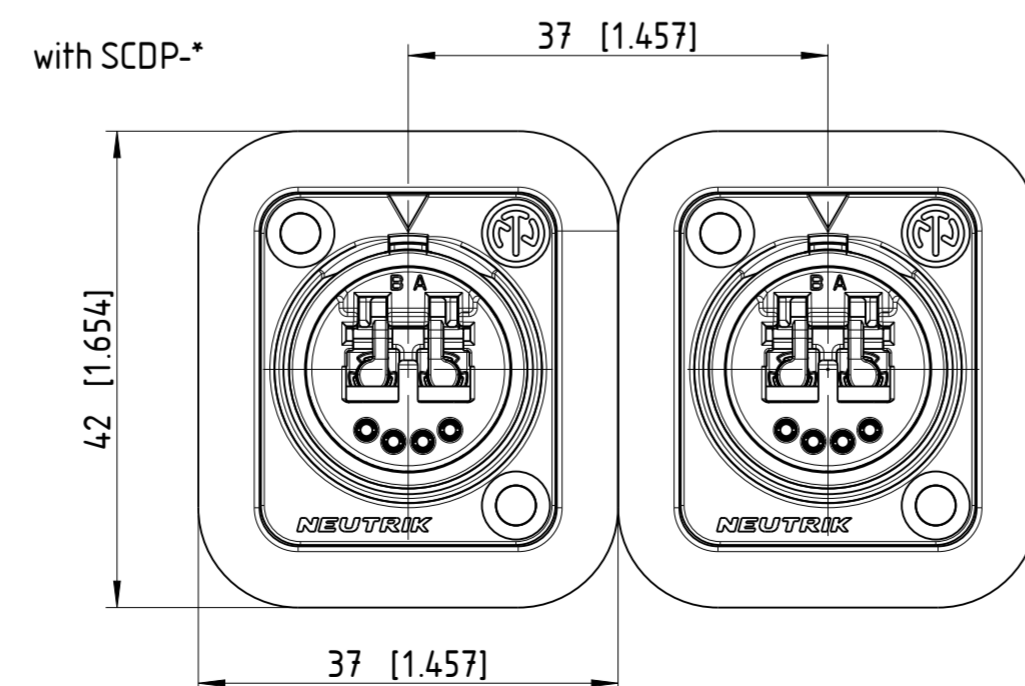
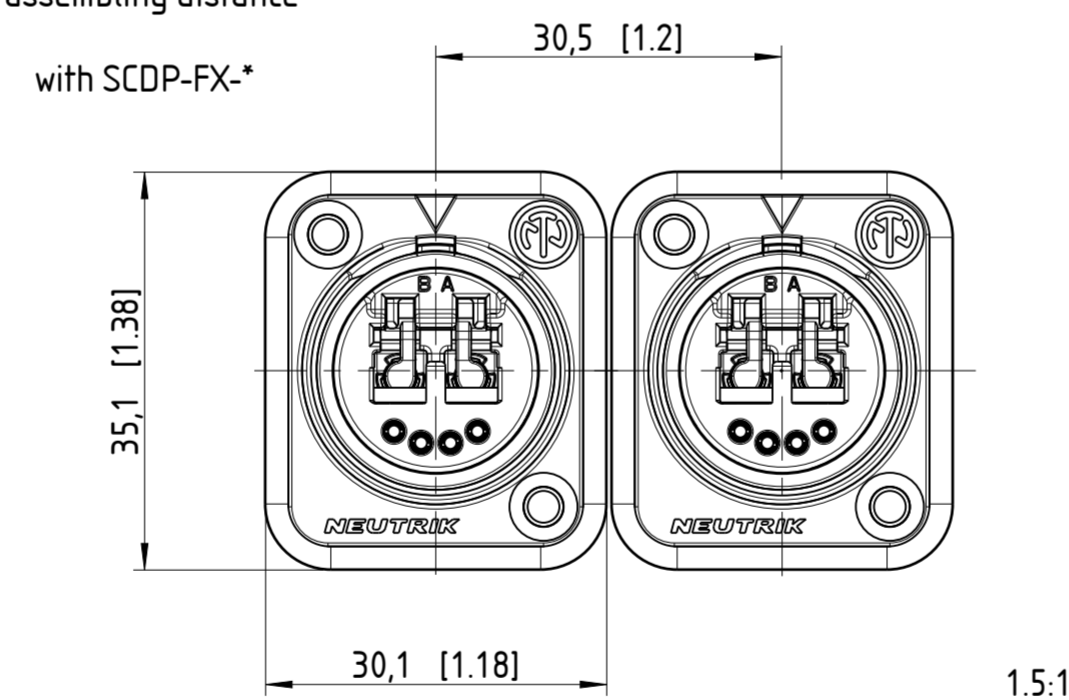
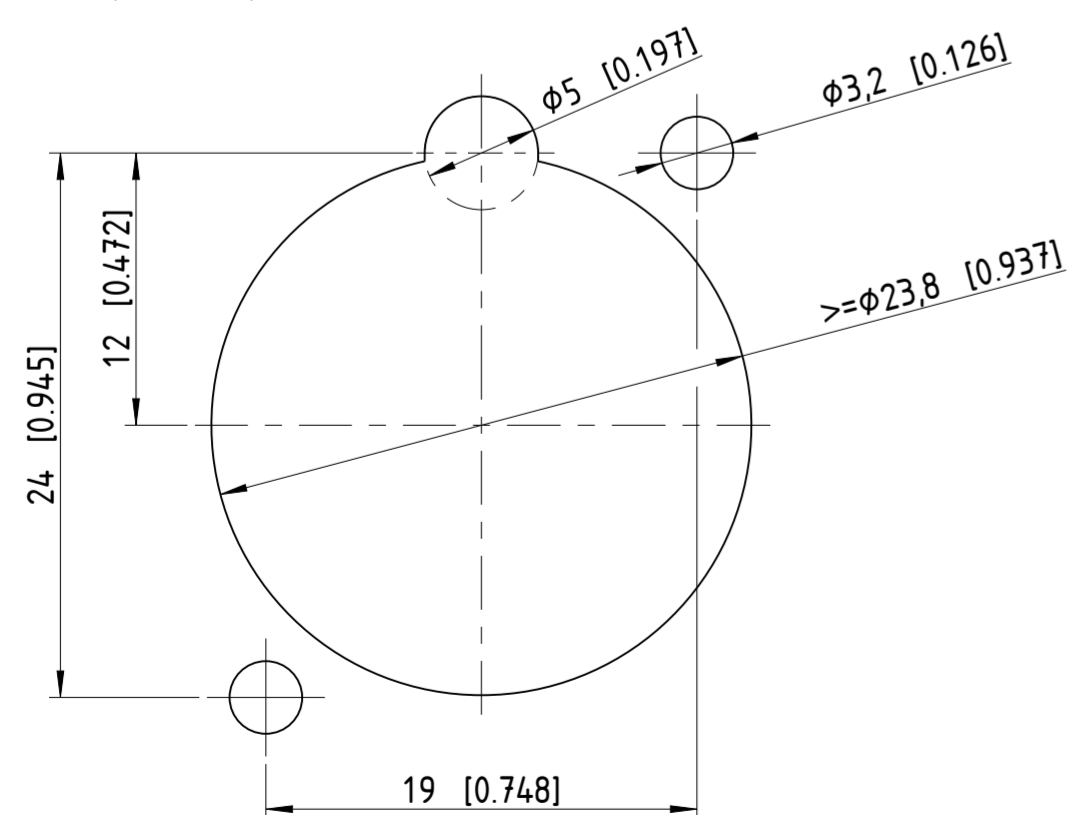


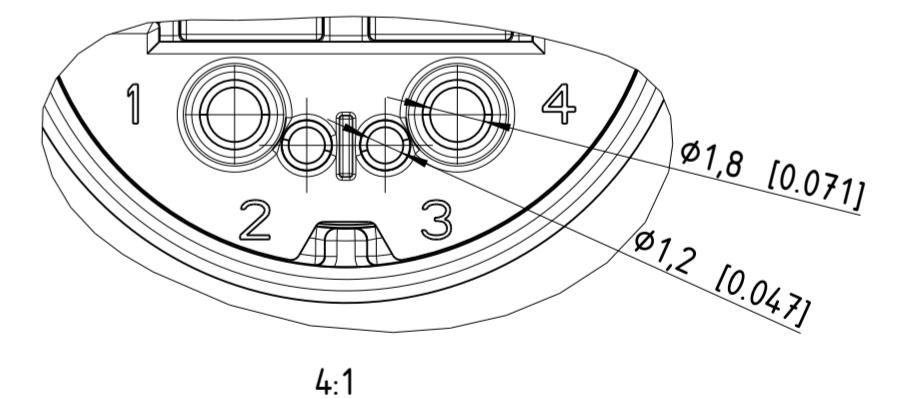
min. Einbauabstand  
min. assembling distance



Frontplattenausschnitt (Rückseite)  
Panel cutout (rear side)



Lötkontakte Rückseite  
Soldering contacts rear side



Nenngeometrie (theoretisch exakt) definiert durch CAD-Datei: Nominal Geometry (theoretically exact) defined by CAD-file: PANEL_CUT_OUT_NO2-4FDW-1-A - "Article ID".stp					
General tolerances ISO 22081	Angular Size	< to 10	10 < S ≤ 50	50 < S ≤ 120	120 < S ≤ 400
	Permitted deviation	± 1°	± 30'	± 20'	± 5'
	Linear Size	< to 6	6 < S ≤ 30	30 < S ≤ 120	120 < S ≤ 400
	Permitted deviation	±0.10	±0.20	±0.30	±0.50
Weitergabe sowie Vervielfältigung dieses Dokuments, Verwertung und Mitteilung seines Inhalts sind verboten, soweit nicht ausdrücklich schriftlich gestattet. Zuwiderhandlungen verpflichten zu Schadenersatz. Alle Rechte vorbehalten. Any distribution, copying, re-production and use of this document as well as any disclosure of its content without explicit written authorization is prohibited. Any violation obliges to the payment of damages. All rights reserved.					
Sheet Number	Projection	Scale	Format	Tolerancing	
1/1		3:1	A2	ISO 8015 Linear Size ISO 14405-1 (GG) Angular Size ISO 14405-3 (GG)	
0.00 g	10.42 cm <sup>2</sup>	0.47 cm <sup>3</sup>	Created on/by	09.01.2025	Schuster R.
Material	-	-	Modified on/by	n.a.	n.a.
Material addition	-	-	Approved on/by	21.01.2025	Mangeng M.
Status	Document Type	Article ID	Model ID	Drawing ID	
Released	Kundendokument	NO2-4FDW-1-A	PANEL_CUT_OUT_NO2-4FDW-1-A	024015041-A	
Description	-	Revision	EEN Number	-	
NO2-4FDW-1-A	-	-	-	-	